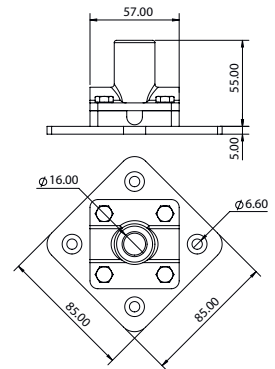
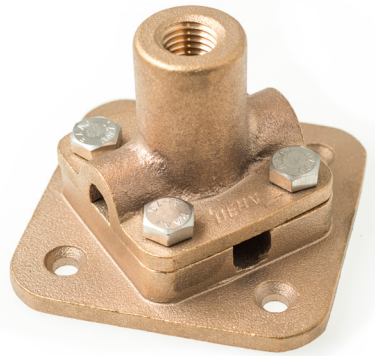


**ATBO 70CS M16 GM (118 447)**



Dimension drawing

Air terminal base for 16 mm rods and 70 mm<sup>2</sup> stranded copper conductor

**NEW**

<b>Type</b>	<b>ATBO 70CS M16 GM</b>
<b>Part No.</b>	<b>118 447</b>
Material	<b>High Copper Alloy</b>
Dimensions	85 x 85 x 60 mm

**Masterdata**

Net weight	1.05 kg/pc(s)
GTIN	4013364470941
PU	1 pc(s)
Customs tariff number (Comb. Nomenclature EU)	85359000

We reserve the right to make changes to the design and technology, dimensions, weights and materials in the interests of technical progress. The illustrations are not binding.